



Verdala
INTERNATIONAL SCHOOL

NEW SCHOOL BUILDING

PROGRESS UPDATE

- KINDER GARDEN
- ADMIN BUILDING
- PERFORMING ARTS SPACE
AND STUDIOS
- ROOF GARDEN

13 MARCH 2023

Introduction

Project Team.

Totty Aris, Head of school

Michael Anastasi, Project Architect / Structural Engineer

Joe Galea, Project Architect

Lisa Carson, Project Manager

Edwin Aquilina, M&E Engineer

Graziella Agius, Site Manager

To present updates and amendments to the design and plans 2022-3

Discuss new timeline for this project, including risks and Delays

We aim to complete works by end of August 2024



Verdala
INTERNATIONAL SCHOOL

Our Responsibilities

Greatly Improve facilities and student experience whilst best utilizing the limited space

Honour our commitment to become more sustainable and environmentally friendly

To design a Modern, innovative building that sits harmoniously within its protected heritage site.

Create a building which fully reflects the schools image, curriculum and commitment to the future.

The school must operate smoothly throughout the construction process





Verdala
INTERNATIONAL SCHOOL

A solid orange horizontal bar spans the width of the page at the bottom.

New Facilities

The new block will contain the following;

- 2 Kindergarten classrooms with an indoor play area and associated facilities **140 sqm**
- An independent Performing arts multi functioning space **115 sqm**
- 2 music & drama studios **105 sqm**
- New Reception and administration area with 5 offices and meeting space **175 sqm**
- Central foyer with facilities, storage and independent server room **75 sqm**
- Roof garden & multipurpose teaching space - lift access **400 sqm**



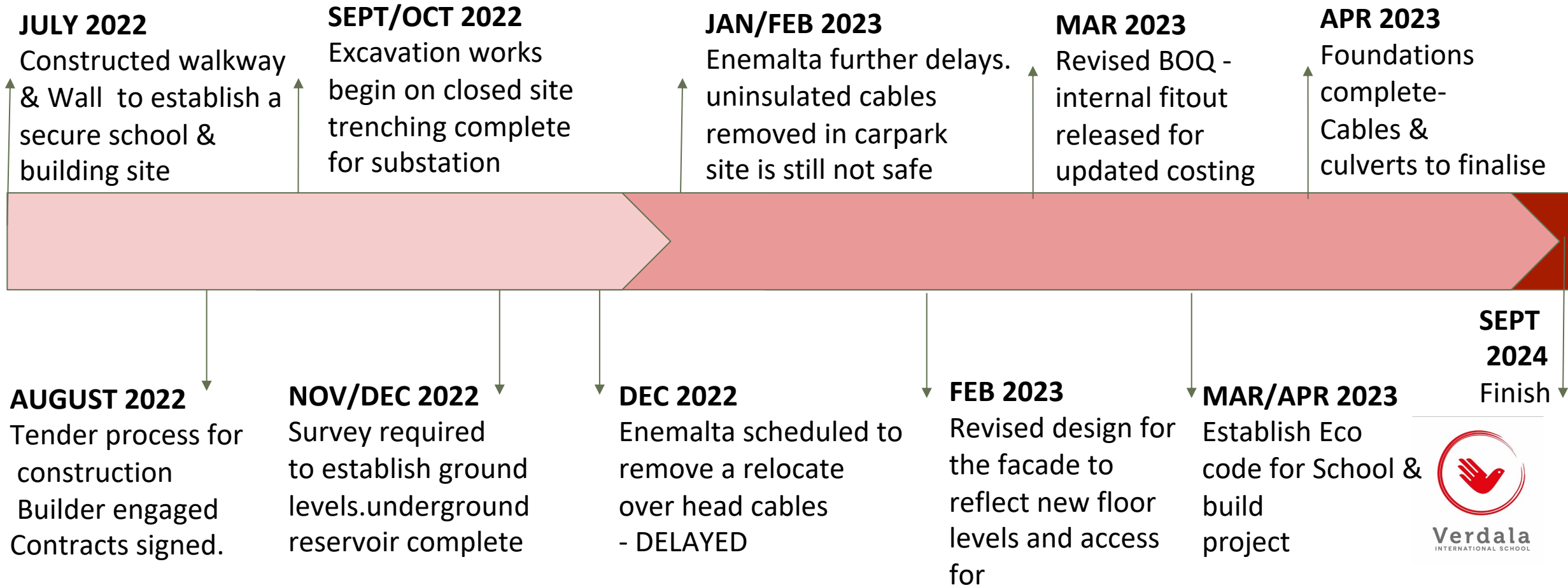


Plan
View



Verdala
INTERNATIONAL SCHOOL

2022 - 2023 Timeline



ISSUES

1. ENEMALTA

REMOVAL OF 3 x TIMBER ELECTRICAL POLES & REDIRECT THE OVERHEAD CABLING

Continuing delays from Enemalta have halted construction works on site for 3+months.

Failure to move and relocate cables is stalling progress as the contractor cannot operate machinery safely.

Works that were to happen in November/December 2022 finally got the green light in Late February -

All works were not completed

The only poles/cables removed were in the car park area, not in the building site.

It seems that the remaining cables are very old & not insulated, this is dangerous and adds risk to the relocation

VIS Team are still in talks with Enemalta to conclude this. Meeting set for Mon 13/03

Enemalta may now need to place the cables in culverts underground The outcome will Affect our Schedule of works



SITE PHOTOS

March 2023



Verdala
INTERNATIONAL SCHOOL

ISSUES

2. GROUND SURVEY & DESIGN AMENDMENTS

EXCAVATION REVEALED THAT WE NEED TO ESTABLISH NEW GROUND LEVELS OVER ENTIRE SITE

This revealed an incline which we needed to work into the design/plans.

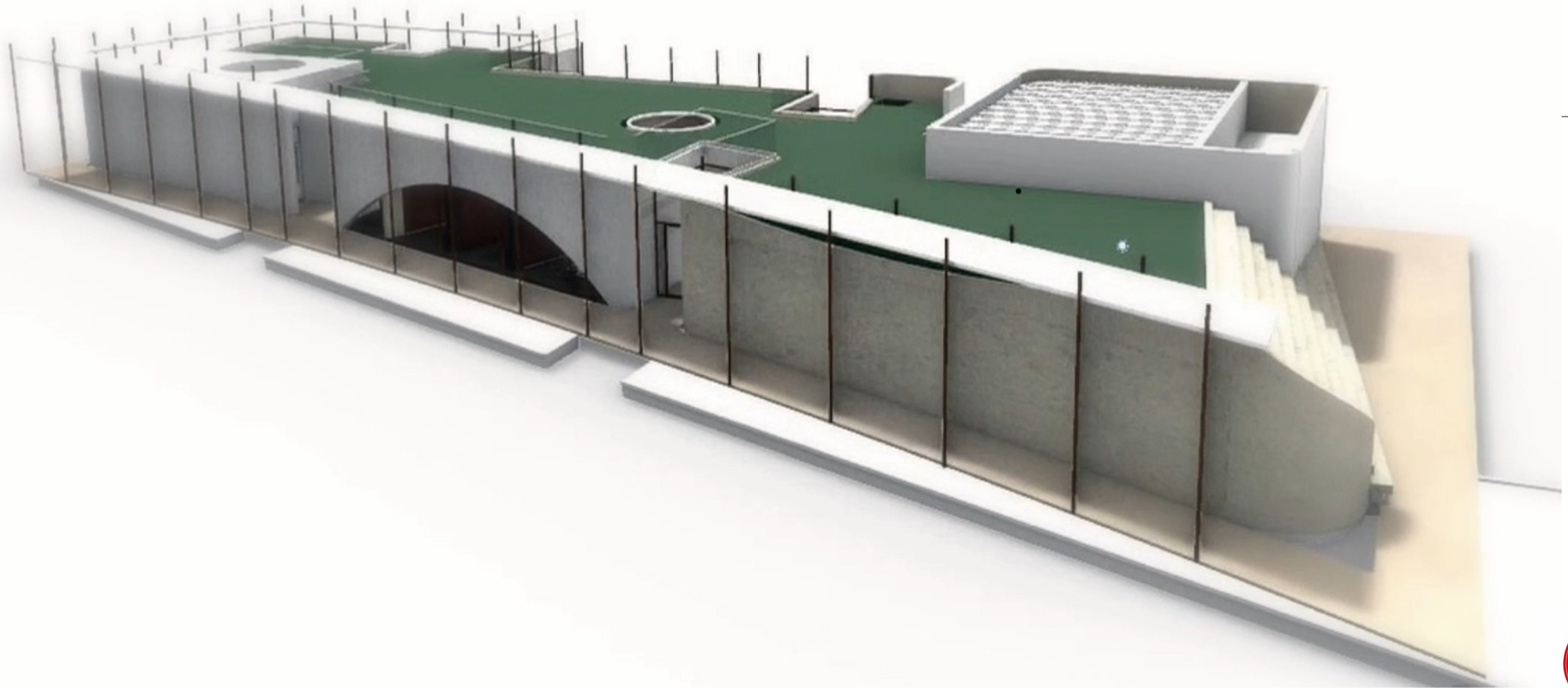
Ensure the slope works with the linear qualities of the facade, as well as not affecting the floor levels inside.

Work out ramps and Access to CRPD guidelines

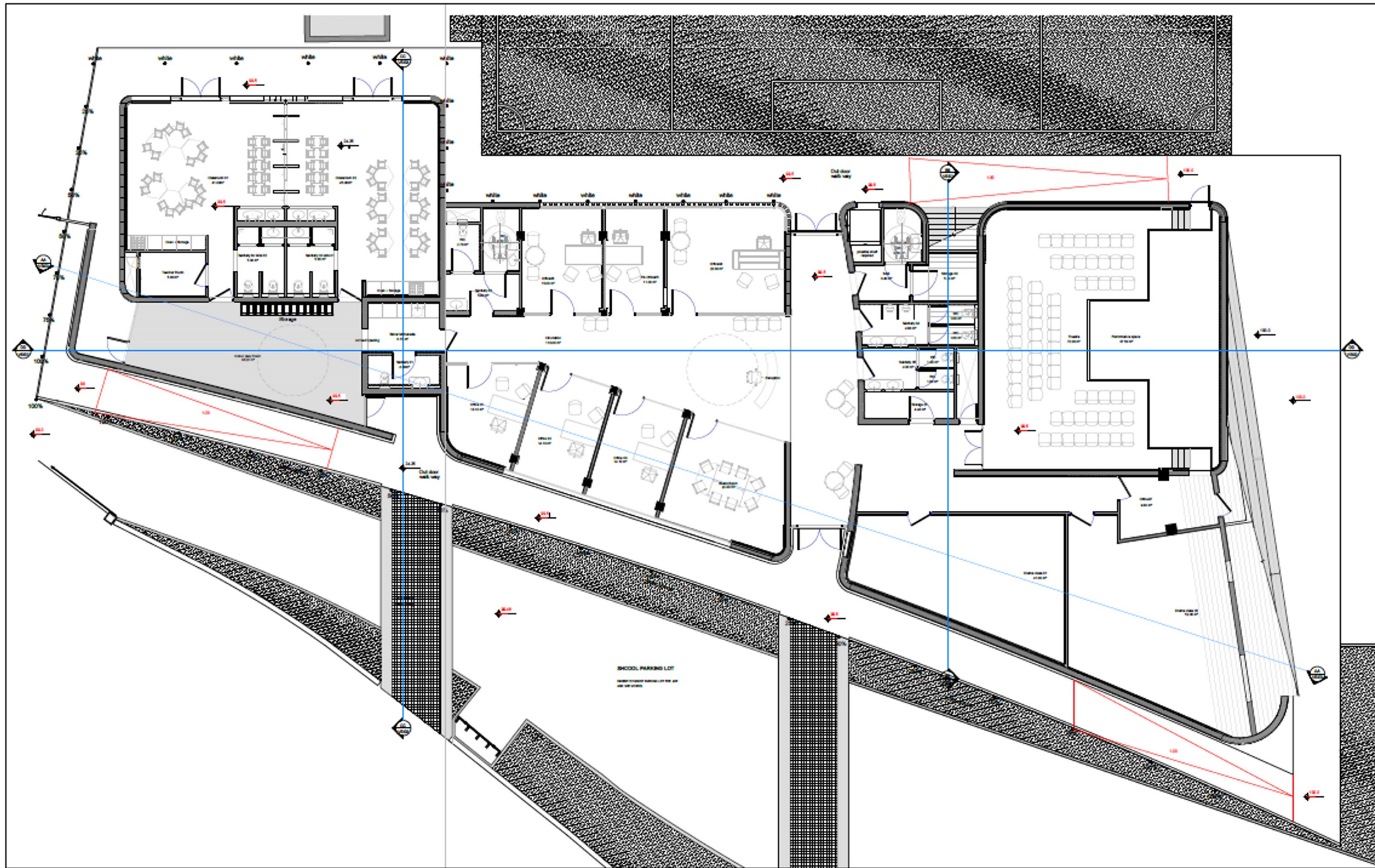
Establish new landscaping to the facade - Carpark, Entrance Gates & timeline of these works



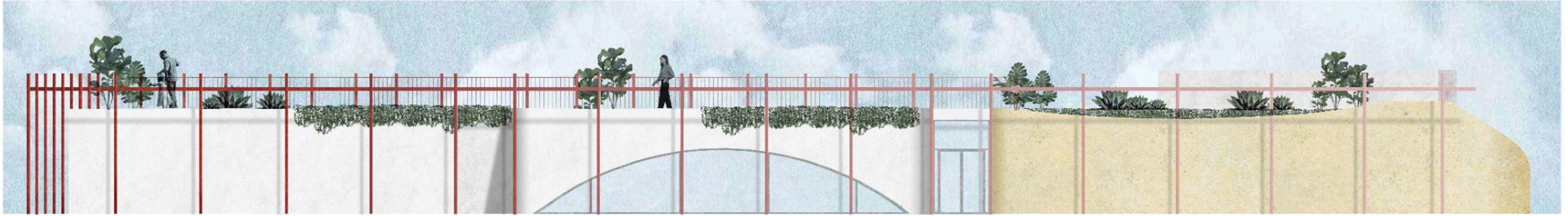
Verdala
INTERNATIONAL SCHOOL



Verdala
INTERNATIONAL SCHOOL



Verdala
INTERNATIONAL SCHOOL



FRONT ELEVATION 2022



REVISED ELEVATION MARCH 2023



Verdala
INTERNATIONAL SCHOOL



BACK ELEVATION 2022



REVISED BACK ELEVATION MARCH 2023



Verdala
INTERNATIONAL SCHOOL

ISSUES

3. ESTABLISH ECO CODE

OUR AIM IS TO CREATE A TAILORED ECO CODE WITH GUIDELINES THAT CAN BE FULLY REALISED IN MALTA

We are dealing with a very unique environment in terms of location, Climate and wider national perspective.

Our roadmap should reflect these factors

We have established a list of guidelines to use when finalising decisions with the new build



Verdala
INTERNATIONAL SCHOOL

ECO CODE outline

Site Selection: Our mission is to select sites for new buildings that take into consideration the building's orientation in relation to the sun, proximity to public transportation, availability of nearby green spaces, and potential impact on local wildlife habitats.

Energy Efficiency: Our mission is to design buildings that minimize energy consumption and greenhouse gas emissions by incorporating energy-efficient HVAC systems, insulation, lighting, and appliances to reduce our environmental impact.

Water Conservation: Our mission is to design buildings with efficient plumbing fixtures, rainwater harvesting systems, and low-water landscaping to reduce water consumption and promote sustainable water use.

Sustainable Materials: Our mission is to use sustainable materials such as recycled or renewable materials, low-VOC paints, and sustainable wood products to minimize the environmental impact of the building.

Waste Reduction: Our mission is to reduce waste during construction and operation of the building by using materials that can be recycled or reused and implementing a waste management plan for ongoing operations.

Green Roof and Walls: Our mission is to install green roofs and walls to reduce energy consumption, improve air quality, and provide habitats for wildlife.

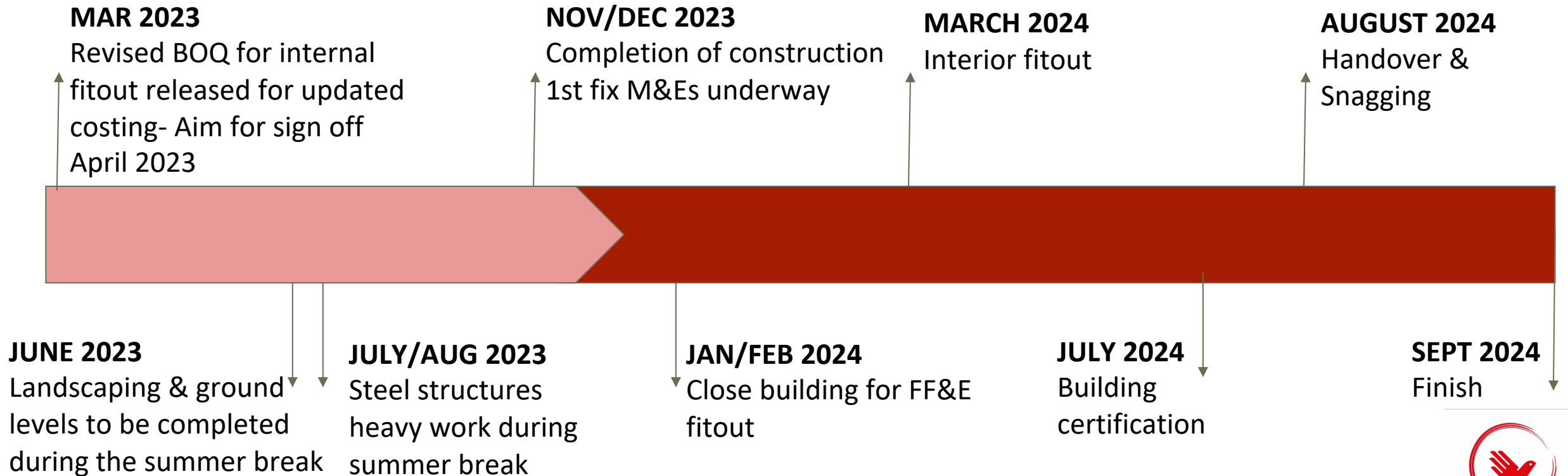
Transportation: Our mission is to encourage sustainable transportation options where possible such as bicycle storage and changing rooms, carpooling, and access to public transportation to minimize the environmental impact of the building.

Adaptation to Climate Change: Our mission is to design buildings that are resilient to extreme weather events and capable of adapting to future climate change scenarios to minimize the impact of climate change on the building and surrounding community.




Indoor Air Quality: Our mission is to design buildings that provide good indoor air quality through the use of ventilation systems, low-emission materials, and maintenance practices that prevent the buildup of indoor pollutants.

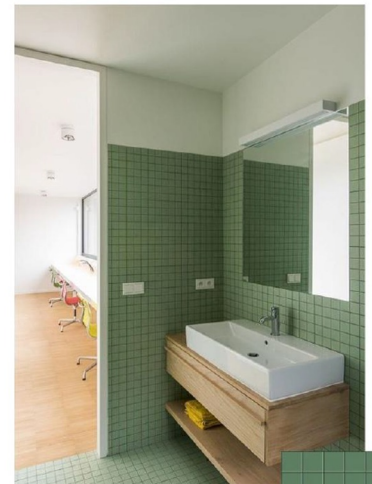
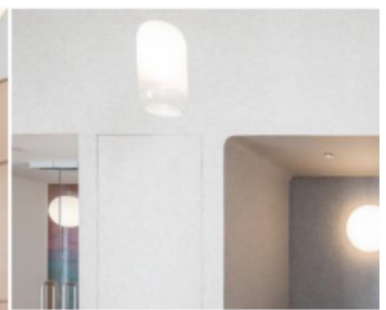
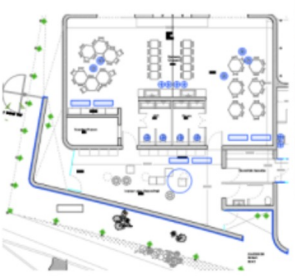
Life Cycle Assessment: Our mission is to consider the environmental impact of the building throughout its entire life cycle, from construction to operation and eventual demolition or reuse, to identify opportunities to reduce its environmental impact over its entire lifespan.

March 2023 - Completion Timeline



KINDER GARDEN

-  calming & gentle
-  warm & comforting
-  grounding



bathrooms



Verdala
INTERNATIONAL SCHOOL



grounding



creativity & concentration



alertness



positivity

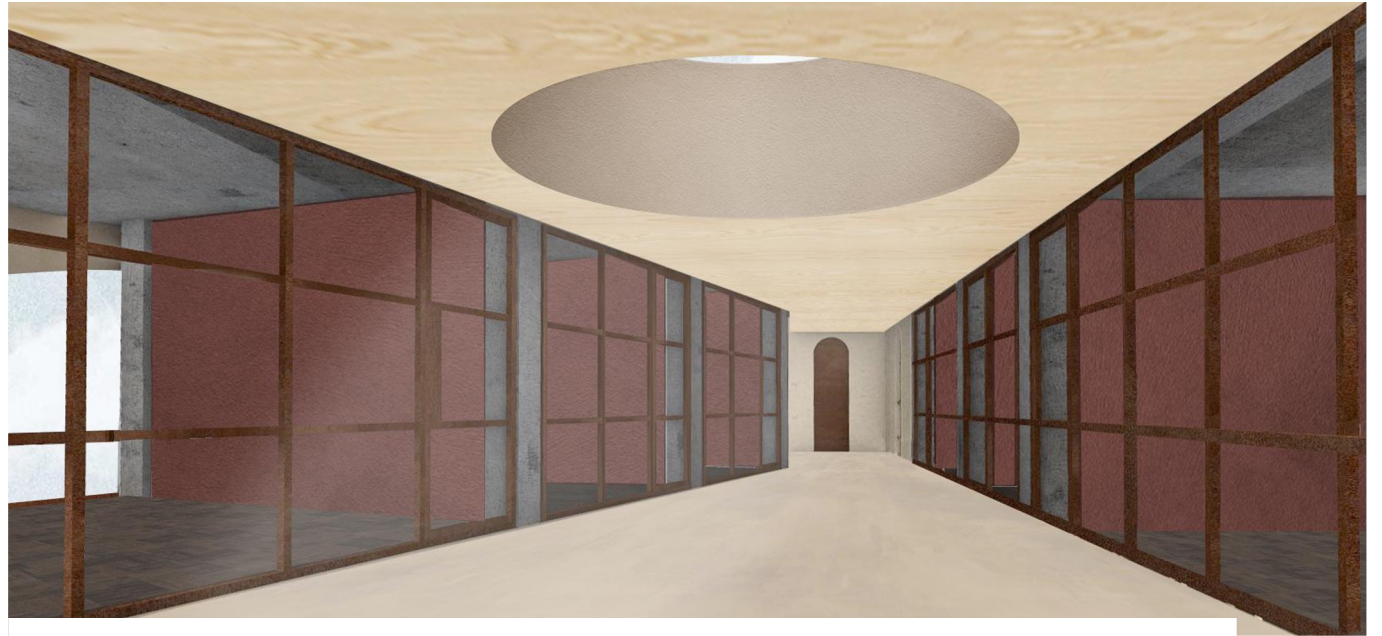


concrete finish



natural cherry

offices



ADMINISTRATION
& RECEPTION



Verdala
INTERNATIONAL SCHOOL



drama class



grounding



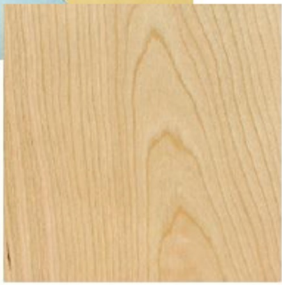
creativity & concentration



warm & comforting



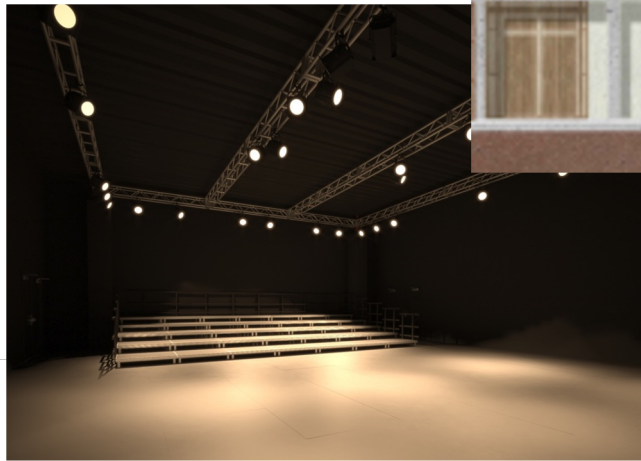
alertness



natural cherry



drapery fabric



PERFORMANCE SPACE & STUDIOS

